

Decimal and Metric Conversion Table

Fractional Equivalent (in.)	Decimal Equivalent (in.)	Metric Equivalent (mm)
1/64	.0156	.397
1/32	.0312	.794
3/64	.0469	1.191
1/16	.0625	1.588
5/64	.0781	1.984
3/32	.0938	2.381
7/64	.1094	2.778
1/8	.1250	3.175
9/64	.1406	3.572
5/32	.1562	3.969
11/64	.1719	4.366
3/16	.1875	4.762
13/64	.2031	5.159
7/32	.2188	5.556
15/64	.2344	5.953
1/4	.2500	6.350
17/64	.2656	6.747
9/32	.2812	7.144
19/64	.2969	7.541
5/16	.3125	7.938
21/64	.3281	8.334
11/32	.3438	8.731
23/64	.3594	9.128
3/8	.3750	9.525
25/64	.3906	9.922
13/32	.4062	10.319
27/64	.4219	10.716
7/16	.4375	11.112
29/64	.4531	11.509
15/32	.4688	11.906
31/64	.4844	12.303
1/2	.5000	12.700

Fractional Equivalent (in.)	Decimal Equivalent (in.)	Metric Equivalent (mm)
33/64	.5156	13.097
17/32	.5312	13.494
35/64	.5469	13.891
9/16	.5625	14.288
37/64	.5781	14.684
19/32	.5938	15.081
39/64	.6094	15.478
5/8	.6250	15.875
41/64	.6406	16.272
21/32	.6562	16.669
43/64	.6719	17.065
11/16	.6875	17.462
45/64	.7031	17.859
23/32	.7188	18.256
47/64	.7344	18.653
3/4	.7500	19.050
49/64	.7656	19.447
25/32	.7812	19.844
51/64	.7969	20.241
13/16	.8125	20.638
53/64	.8281	21.034
27/32	.8438	21.431
55/64	.8594	21.828
7/8	.8750	22.225
57/64	.8906	22.622
29/32	.9062	23.019
59/64	.9219	23.416
15/16	.9375	23.812
61/64	.9531	24.209
31/32	.9688	24.606
63/64	.9844	25.003
1	1.0000	25.400

Mass Conversions

- To convert from U.S. tons to metric tons multiply by .907185
- To convert from metric tons to U.S. tons multiply by 1.10231
- To convert from metric tons to pounds multiply by 2204.62
- To convert from metric tons to kilograms multiply by 1000
- To convert from pounds to kilograms multiply by .453592
- To convert from kilograms to pounds multiply by 2.20462

Temperature Conversion

To convert from degree Fahrenheit to degree Celsius use

$$T_c = 5/9 (T_f - 32)$$

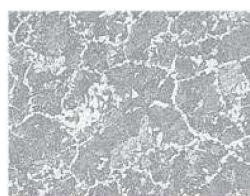
To convert from degree Celsius to degree Fahrenheit use

$$T_f = 9/5 (T_c) + 32$$

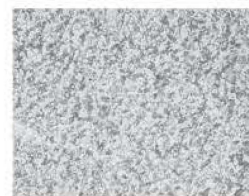
Crosby Quenched & Tempered® Fittings: Superior Quality & Reliability



AS FORGED



NORMALIZED



QUENCHED & TEMPERED



Unretouched Photomicrographs (100x) of fitting